

P.O. Box 392

Kamloops B.C., V2C 5K9



THE PATCHWORK PRESS

November/December 2008

President's Message

It's the beginning of November and we're well under way with our quilting year.

A special welcome to new members.

We're 'quilting 'til we wilt', 'workshopping' and 'retreating'. We've had some fabulous 'show and tell' and there have been great stories being told as we show our latest quilting projects. Thanks to all of you for your great work! Remember to put your name in the box for the draw.

Congratulations to this newsletter winner! (read on to see who you are!)

We're well underway with plans for the 2009 Quilt show.

We'll be working on several projects during our program

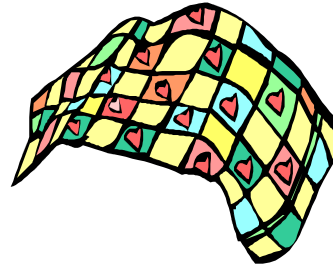
evenings throughout the year.

Hope you enjoyed sewing pillow cases for the sales table.

Christmas is coming, so we'll look forward to seeing your projects and hearing the story of your project, because **Every Quilt tells a story...**

tell us

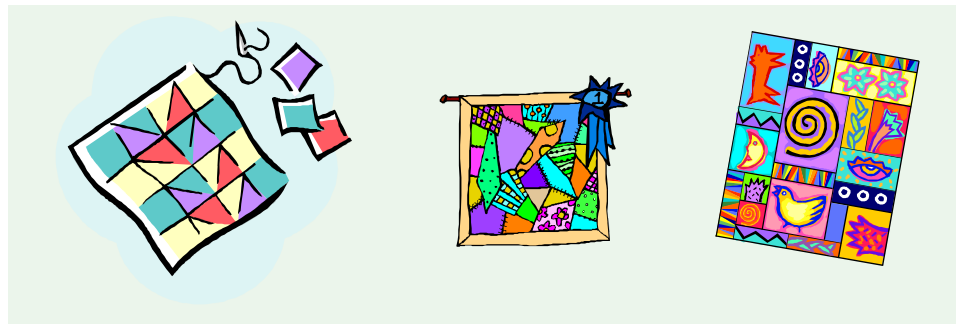
please yours.



We sadly bid farewell to one of our members, Thelma Haines.

Thelma, our hospitality lady for the past two years, passed away unexpectedly over the Thanksgiving weekend. She did a wonderful job looking after our Guild Hospitality. She bought the chocolate fountain especially so she could share it with us at guild.

What a good friend she was! We'll miss her smile, her laugh and her willingness to jump in and participate in whatever the guild was up to!





Program Committee:

We hope you have enjoyed the program so far this year. It is a bit discombobulated with no chairperson but we are cobbling it together so far and hope to continue to bring you a variety of programs.

Thank you so much for leaping in on the sale table nights. Many hands make light work and all your efforts are appreciated. There will be a couple of more sale table programs coming up, mixed in with regular programs.

Thank you to all of you who worked on pillowcases for the sales table at the last meeting. If you were unable to attend the last guild meeting and would like to contribute, the sales table committee is accepting donations. Consider donating fabric so that the sales table committee can make more pillowcases.

As for me I am wearing a lot of hats this year so if you see me sometime looking confused or disoriented, please tell me where I am and what I should be doing there! I'll try and do the same for the rest of you wearing many hats!

WHAT TO BRING:

Nov. 10. Routine stuff like show and tell, coffee mug etc. Alphabet squares if you are in the exchange. They will be handed back in sets tonight.

Nov. 24. Coffee mug, name

The fabric requirements are: 26" length width of fabric (WOF) for the main part of the pillowcase and a 9 1/2" strip (WOF) of a complimentary fabric color and one 1/2" strip (WOF) of a contrasting colour. Alternatively, if you can make the pillowcase and donate it all completed, that would be fabulous!

tag, show and tell. For the program tonight please bring: hand sewing needle, thimble, small scissors, 6 inch ruler and a few straight pins. Everything else will be provided. If we asked a few of you to bring other stuff please do so. At the moment I don't know for sure if we will need anything else.

Dec. 8. Show and tell, coffee mug (fancy one if you want-after all it IS a celebration!!), name tag. Remember your food items. Those who took Laurie's classes remember your show and tell too.

A reminder that the Door Prize Quilt group is looking for 4.5" strips of fabric (one dark and one light) for a scrappy quilt that will become our Quilt Show Door Prize. Kathy Mirtle & Judy Anderson are collecting these strips and will have a bin available at the next few meetings to collect them.

Sales Work Table Parties for 2008:



You are asked to bring your sewing machine and supplies, a good attitude and the desire to have some FUN!!

Hot Soup and beverages will be supplied.

Bring whatever else you want to eat or share with others. We look forward to seeing

some new faces to help in any way with this worthwhile activity.

Any questions???

Call Delores 250-372-9272 or Barb 250-374-4680

HOPE TO SEE YOU THERE!!

Sessions run 9:30-3:30'ish.

*The dates are as follows:
Wednesday, November 5th
Friday, November 21st
Wednesday, December 3rd
Friday, December 19th*

Delores Owen



LIBRARY NEWS



I have been renewing our magazine subscriptions and perusing new books.

If you have read a good book, learned a great new technique or have a new gadget to share, please tell us about it during a meeting. Your name will go into a draw for a neat prize and we will all learn something new.

Many thanks to all the people who have been helping set up the books, re-carding the returns and filing the sign-out cards.

The library is set up prior to the start of our meetings and we generally put things away after coffee.

If you have a return we would appreciate it being put in the box at the beginning of the meeting so it is back in circulation as soon as possible.

If you are looking for a specific book that is already signed out let me know and we will tag the card for you and let you know when it is returned.

A final little reminder. . . please don't keep the books you are enjoying for more than 2 meetings. You can return it and if no one else signs it out that night, sign it out again. We are finding that some of the more popular titles are going home for extended stays with one person and we want to be fair to all members!!

Thanks for your help and consideration.

Lorraine Balogh

MEMBERSHIP

To date we have 107 members with 4 being associate and 3 being honorary!

The directory will be out soon so please hold on to the old one for a bit more.

We are still taking small donations of items suitable for door prizes.

We are going to start a new way of dealing with the forgotten name tags.

I will have name tags available for use, but at a cost, 25 cents! The money earned will then be used to buy an extra door prize at

the end of the year.

I want to wish everyone a very Happy and Save Holiday Season. Try not to get too stressed out over unfinished projects, there is always next year!!

Merry Christmas from,

WORKSHOPS

We're off to another great start this year! The Laurie Turik Mystery Class and Jacket Class were wonderful.

Many thanks to Julie Ottosen for billeting Laurie- what great friends they have become!

Don't forget about the dates for the QTYW's coming soon:

December 6, 2008 &
January 24, 2009.

Please register ASAP for the upcoming classes, The Mary Ellen #3, Scrap Club #2, Split 9-patch, Forest Path, Beneath the Sea and the Quilt as Desired Class. Please see the last newsletter for descriptions and prices. I have pictures available to view for the Forest Path and Beneath the Sea Classes.

We need to make sure that the classes are well attended in order to bring in a teacher, otherwise

costs for the teacher, travel and perhaps lodging may make it too expensive. We are giving you superb prices for these classes, so please sign up for some! Please remember that the QTYW's and Classes are in the International Building at TRU, Room 1014, & park free in Lot A.

Happy Quilting,
Sandy Madden

Quilt Show Update! "Celebrate 2010"

Time to start thinking ahead about which quilts you would like to have ready to show at our upcoming Quilt Show – (September 18 & 19th 2009 at the Calvary Temple). Quilts for the show cannot have been shown in a previous Sagebrush Quilters' Guild quilt show.

Each member will be able to show at least 2 quilts – likely 3. Any spaces left available by members not choosing to show their quilts will be made available by lottery to those interested in showing more of their work.

Yes, you will be able to have your **quilts for sale**. There will be no commission charge. We appreciate your assistance and volunteer shifts helping put on the show instead. You set a price, which will be firm and we will put you in touch with any interested purchasers.



We will start **registering quilts** in January 2009. All quilts need to be registered by the end of June 2009. You will need to know the pattern name and the name of the pattern designer for all your quilts. We will need the size of the quilt to help us plan the displays and of course our viewers always like to read about who the quilt is for, and why you picked the pattern. Every quilt tells a story!

Yes, there will be a challenge for the quilt show. Details to follow soon!

We are looking into having some "guest" quilts (they could be from non-members or be quilts that have been shown before) along a sports theme. If you have a quilt based on a winter sport to suggest, please let someone on the Quilt Show committee know! We are hoping to have quilt demos on the stage to show visitors how quilts are made. We have a committee that has started on the door prize quilts (there will be two of them; one large and one lap size). And yes, there will be a merchant mall!
Less than a year to go

Your 2009 Quilt show Committee

Show Co-chairs - Doffy Bourbonnais & Wanda Story
Secretary - Brenda Sanden
Treasurer/ Cash Security - Cheryl Dyck
Advertising/Publicity - Vacant, are you interested?
Volunteers/Security - Claire Johnson
Quilt Registration - Wanda Story
Quilt Show Set up - Vacant, are you interested?
Merchant Mall - Marg Johnson & Joan Todd
Ticket Sales - Sandy Madden
Sales Table - Delores Owens, JoAnn Whittaker & Barb Laing
Block Challenge - Marie Allen
Door Prize Quilts (Bed and Lap Sized) - Kathy Mirtle & Judy Anderson
Tea & Goodies - Julie Ottosen & Barb Kenyon
Viewers Choice/Awards - Vacant, Are you interested?

Wednesday Morning Quilt-In:

November 12	None booked yet	
November 19	None booked yet	
November 26	None booked yet	
December 3	Jeanne Chambers 306 Robson Drive	372-1146**
December 10	None booked yet	
December 17	None booked yet	

** Sales Table Day

Friday Morning Quilt-In:

November 7	None - Retreat	
November 14	Rosemarie Griffin	554-3314
November 21	Delores Owen	372-9272
November 28	Barb Baker	828-6238
December 5	Miriam Marchuk	374-6060
December 12	Butch Dixon	573-5152
December 19	Delores Owen	372-9272



HOSPITALITY:

The following people have signed up to bring food.
Please remember to bring enough for 18 people:

November 10th

Cheese and Crackers:

Cathy Wilcox
Lila Foley
Marie Allen
Donna Hartwell

November 24th

Finger Foods:

JoAnn Whittaker
Barb Baker
Miriam Marchuk
Gladys Klepachek

Dec 8th - Cookies:

Butch Dixon
Elizabeth Biagioni

For the December 8th meeting, everyone should bring food to share for four and their own dinnerware. The guild will provide beverages.

Thank you to everyone and have a safe and happy Holiday Season!

Connie Burris

Miscellaneous:

We are now registered on a World Wide Quilters' board!

*Check out the website at:
<http://www.victorianaquiltdesigns.com/VictorianaQuilters/Library/QuiltGuilds/QuiltGuilds.htm>*

The sales table is once again putting out a request for good quality 100% cotton fabric donations—any colour/design/size & batting 6" sq or larger. You may either bring donations to a guild meeting or call Delores at 372-9272 or Barb at 372-4680 for pick-up.

*The Winner of the Show and Tell Draw is:
Gretta Popove*

*Congratulations Gretta!
please contact
Marlene Glover to claim
your prize!*

Community Quilts:

Next quilt days are Wednesday, Nov 12/08, Dec 10/08 & January 14/09 at Katja's Quilt Shoppe. Come and quilt with us. Questions? Contact Jane Barley at 828-0355 or at jbarley@tru.ca.

Bus Trip:

A reminder that Sandy Madden is organizing a trip to Washington State for next August 20-23, 2009 in conjunction with a Ricky Tims seminar. If you are interested in this trip, contact Sandy Madden.

Alphabet fabric exchange:

For those of you signed up for the second batch of alphabet squares, please remember to cut 26 pieces for each letter you chose.

Also, please put your name on each bag when you return them (especially for those of

you with more than one letter) to ensure we give you back the appropriate number of sets.

The next exchange is slated for the November 10th guild meeting. If you are unable to attend, please ask another quilter to bring your sets with

SAGEBRUSH RETREAT REGISTRATION FORM: March 26-29, 2009

NAME: _____

Telephone: _____ **EMAIL:** _____

SHARING A ROOM? No ____; Yes ____ **Roommate:** _____

Massage: Yes ____; No ____

Length: (choose one): 30 min ____; 45 min ____; 60 min ____;

SIGNIFICANT ALLERGIES:

- Significant food allergies: _____
- Vegetarian (please be specific): _____

The retreat begins at 2:30 p.m. on Thursday and goes to 2:30 p.m. on Sunday.
Please wait outside if you arrive before then.

A three-night stay includes dinner on Thursday. Single rooms may be requested for a three-night stay only. A two-night stay includes dinner on Friday. If you plan to arrive for lunch on Friday, please indicate below.

LENGTH OF STAY: 3 nights ____; 2 nights ____

LODGE PREFERENCE (not guaranteed): Nova Vita ____ Caritas ____

COST PER PERSON: (may change when 2009 rates are provided to us in December)

Please indicate your choice:

_____ 3 nights:	\$230.00	(2 cheques for \$115.00 each)
_____ 3 nights/single	\$270.00	(2 cheques for \$135.00 each)
_____ 2 nights:	\$165.00	(2 cheques for \$82.50 each)
_____ 2 nights & Friday lunch:	\$175.00	(2 cheques for 87.50 each)

TO REGISTER: Please return the registration form with your total payment. You may write two cheques and post-date the second cheque to February 23, 2009.

Note: Your **early** registration is very important as this retreat is only booked for 24 quilters in one building. As well, Sorrento Centre now requires a non-refundable guarantee 120 days in advance in order to reserve our booking, hence we need to ensure that there are sufficient numbers of quilters attending.